

Reverse Voltage Motor Controller

Manual V1.0.2



!!! Warning !!!

DO NOT return the item to the original retailer. Contact the support for any problem with the item or item delivery: shop@timers.shop

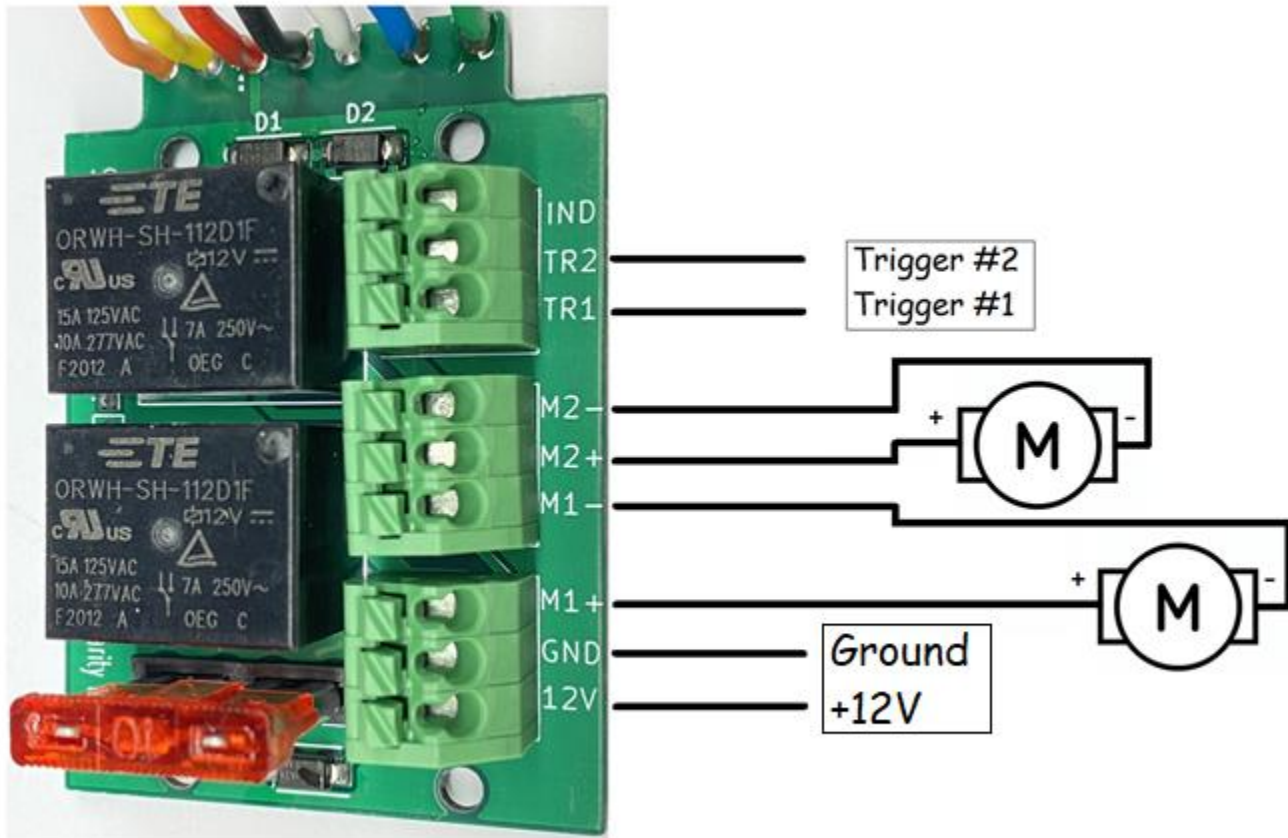
Reverse voltage motor controller is designed to operate DC electric motors. The controller has two trigger inputs and four modes of operation.

Supply voltage: 10-14 V

Current capacity: 10 Amp

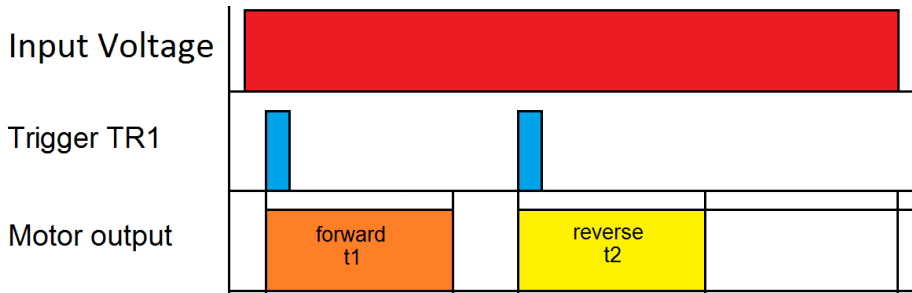
Installation

Connect the controller according to the diagram below. Strip the wires about 1/4 inch, push the tab of the green quick connector block, and insert the wires. Connect ground and +12 V. Depending on the modes of operation connect Trigger #1 or/and Trigger #2.

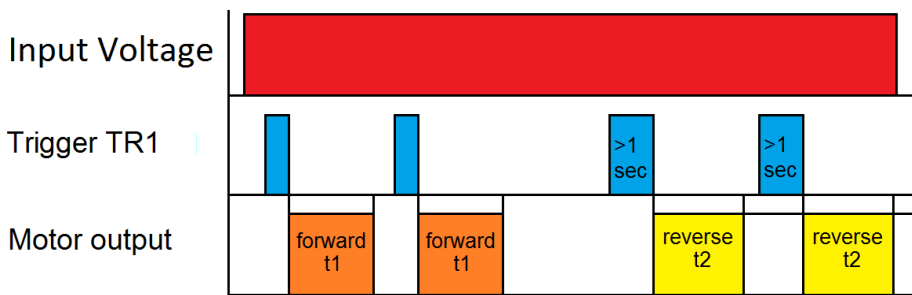


Modes of operation:

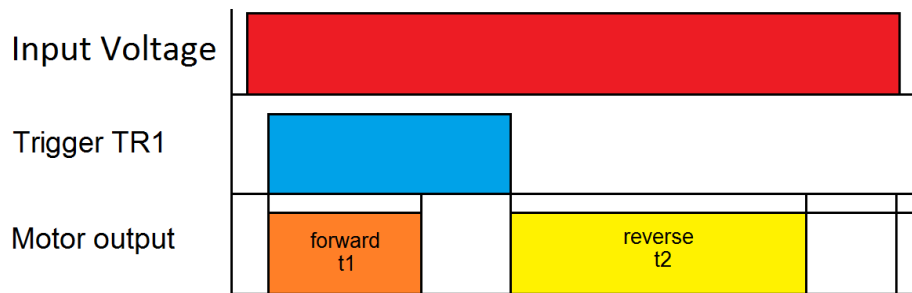
#1 – When trigger is applied the motor rotates forward for preset t1. Consecutive application of the trigger reversing the motor for time t2.



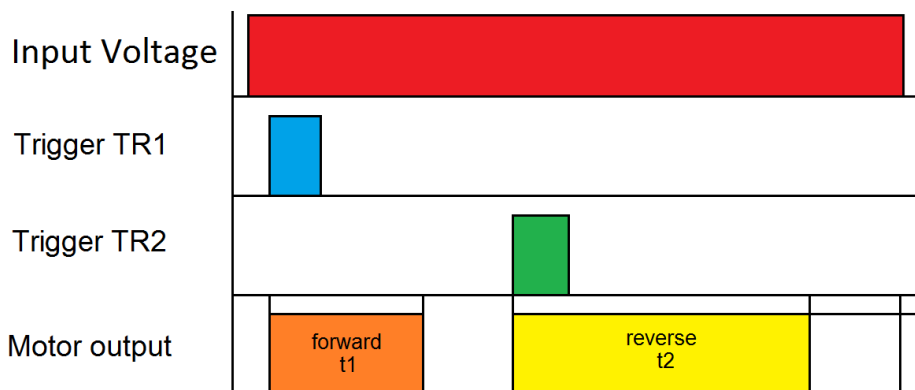
#2 – When trigger is applied for a short duration the motor rotates forward for t1. If the trigger is greater 1 second the motor rotates in reverse for t2.



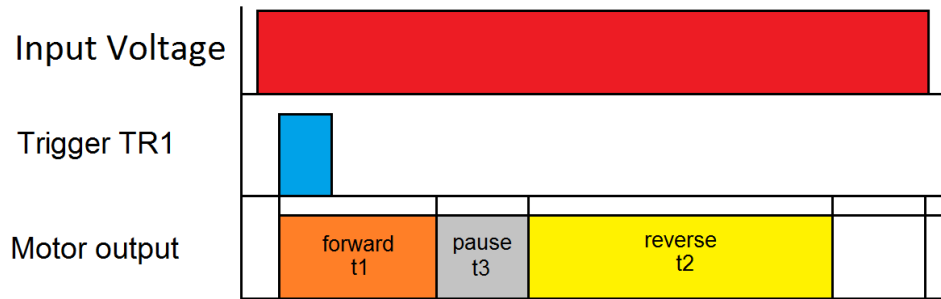
#3 – When trigger is applied the motor rotates forward for t1. When trigger is removed the motor rotates in reverse for t2.



#4 – When trigger TR1 is applied the motor rotates forward for t1. When trigger TR2 is applied the motor rotates in reverse for t2.



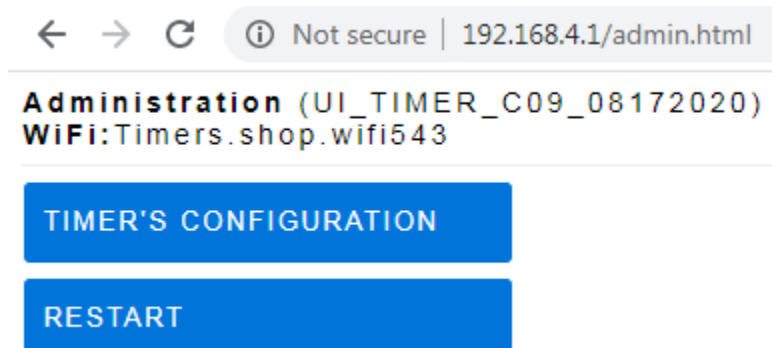
#5 – When trigger TR1 is applied the motor rotates forward for t1, pauses for t3 and then rotates in reverse for t2.



Timing adjustment and testing

To configure the forward and reverse timing, enable the controller's Wi-Fi interface.

1. To enable the Wi-Fi, apply trigger TR1 ten+ times within a couple of seconds. The controller's internal blue LED will light up when Wi-Fi is enabled.
2. Search for the available Wi-Fi networks on your computer/phone.
3. Connect the computer/phone to the "Timers.shop.wifixxx" wireless network.
4. Open the browser and enter the following into the address bar: **192.168.4.1** and click go or connect.
5. Once connected you will see the menu:



6. Click on **TIMER'S CONFIGURATION**.

Timer Settings

Firmware: FUNC_C09_V1.0.2
Checksum: 17338
Bootloader: V1.0.12 HW5.0

WiFi ID:

Motor control:
Function :
Forward duration:
Reverse duration:
Pause duration:

Get support at <http://timers.shop>

7. Select function, forward and reverse duration. Click Save.
8. Test the configuration by applying the triggers.
9. Once satisfied, turn off and re-apply power to test.